



ORLANDO REID

 **ORLANDO REID**
LONDON

Hartington Road, London, SW8

£425,000



ORLANDO REID

SUMMARY

Set on the 8th floor, this fantastic two-bedroom apartment boasts impressive views and a bright, comfortable living space in a highly sought-after location. Ideally positioned close to the vibrant amenities of Nine Elms, residents benefit from a flagship Sainsbury's, excellent transport links via the Northern Line, and easy access to nearby Vauxhall.

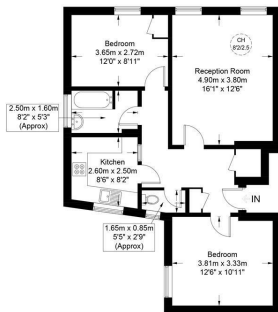
The property is both spacious and stylish, with a well-designed layout that flows beautifully throughout and offers plenty of built-in storage. The accommodation comprises a generous reception room, a bright and well-appointed separate kitchen, two well-proportioned bedrooms, a modern bathroom, and a separate WC.

Just moments from Wandsworth Road, the apartment is perfectly placed to enjoy a wide range of local amenities, including the renowned New Covent Garden Market for fresh produce. Superb transport connections are within easy reach, with Stockwell, Nine Elms, and Vauxhall stations all nearby, providing swift access into the City.

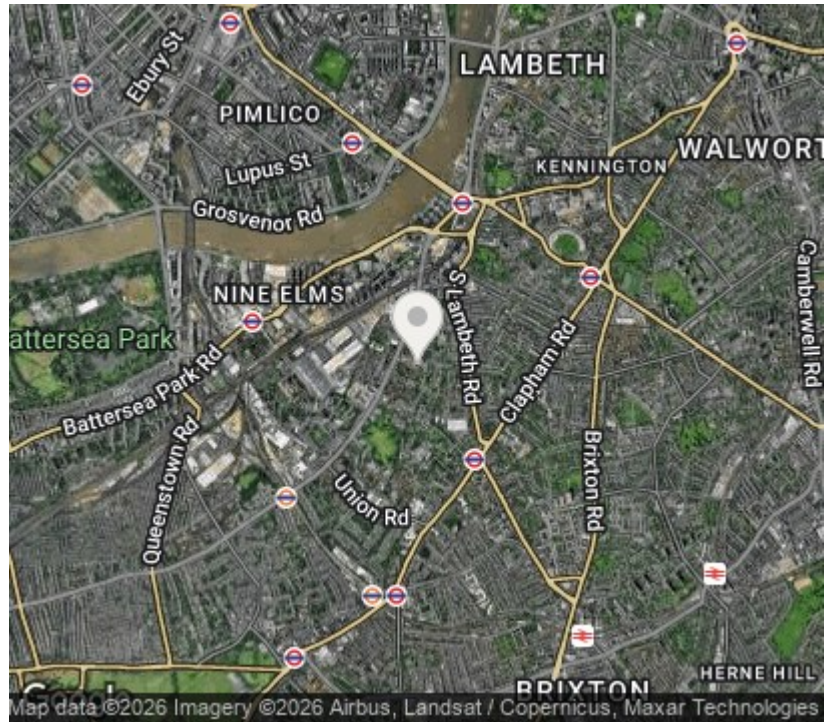


Kemp Court, SW8

Approximate Gross Internal Area = 717 sq ft / 66.61 sq m



This plan is for layout guidance only and is not drawn to scale unless stated. All dimensions, including windows, doors, and the Total Gross Internal Area (GIA), are approximate. For precise measurements, please consult a qualified architect or surveyor before making any decisions based on this plan.



Orlando Reid Sales 1-3 Old Town, Clapham, London, SW4 0JT

Tel: 020 7627 3197

Email: sales@orlandoreid.co.uk

Agents Note: Whilst every care has been taken to prepare these sales particulars, they are for guidance purposes only. All measurements are approximate are for general guidance purposes only and whilst every care has been taken to ensure their accuracy, they should not be relied upon and potential buyers are advised to recheck the measurements.